

# LEATHER MAGIC VINYL REPAIR INSTRUCTIONS

Thank you for purchasing the Leather Magic Vinyl Repair Kit. We know that you will be completely happy and amazed with the results of the repairs that you are now able to make with this kit. The materials contained in this kit will enable you to make permanent cosmetic repairs to almost any type of vinyl. By following these simple instructions you will make long-lasting and cosmetically acceptable repairs to furniture and automotive upholstery, vinyl jackets and clothing, luggage, purses, golf bags and many other uses.

Please have the following items available before beginning the repair process: Cloth or Paper towels, 110 V outlet and extension cord. Please connect the curing tool to the electrical supply so that it will be hot when you are ready to proceed. Exercise extreme caution when using the curing tool, since it will develop extreme heat which may cause bodily injury or damage to property.

## Step 1: Prep the area

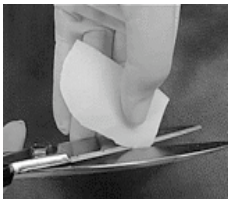
The area must be clean of all dirt and oils. Use the alcohol swab provided to scrub the entire area. Wipe the area dry with a clean cloth or paper towel and wash the area a second time. This will ensure a clean surface. Wipe the area dry once again.



## Step 2: Place Sub-patch into position

If making repairs to scratches, cracks or burns only on the surface of the vinyl (not all the way through the vinyl), skip to step #4.

For holes, burns or cuts all the way through the vinyl, the following steps must be taken:



Cut a piece of sub-patch material (provided) at least 1/2" diameter larger than the hole. Using a pair of tweezers, push the sub-patch under the vinyl. Be certain that the sub-patch is **between** the vinyl and the foam padding. Also make sure that the sub-patch lies flat, no curled or raised edges, this will cause the sub-patch to become visible on the surface of the repaired area later as well as weaken the strength of the repair. Center the sub-patch material so that it is even in all directions around the hole.

## Step 3: Lay Damaged Vinyl Flat:

Select the graining paper ( included in the kit) that most closely matches the grain pattern of your vinyl. Lay this grain paper over the damaged area and apply the curing tool over the graining paper. Apply very light pressure to the tip of the curing tool and move in circular motions over the damaged area. Allow the heat and pressure of the curing tool to force the vinyl back into the original position. If the vinyl does not lay completely flat, do not worry, this will be corrected later. Allow sufficient heating time ( approximately 20 - 30 Seconds for the vinyl to heat enough for the process to be successful. Test an inconspicuous area of the material prior to general application as different vinyl materials will require varying amounts of curing time. Overheating may cause the vinyl to melt and create the need for a much larger repair area. Allow the heated area to thoroughly cool before peeling Graining Paer away from the area.



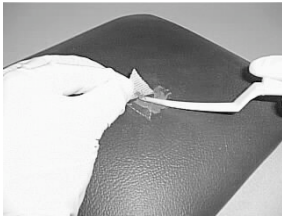
## Step 4: Mix Color of Repair Compound



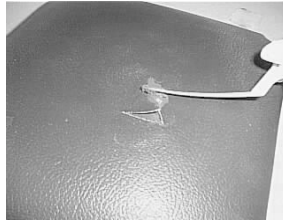
The repair compound comes in eight different colors and will need to be mixed in order to match the existing color of the vinyl you wish to repair. Color matching instructions are included in the kit. An empty 35mm film canister or other device is highly recommended for mixing purposes. Once mixed, any remaining compound that has not been used may be placed in a sealed container and kept for later use. For best color matching results, choose a work area with as much natural light as possible. Also keep in mind that the colors will darken slightly as they dry, so the wet compound color will need to be made a bit lighter than the original color.

## Step 5: Apply Repair Compound

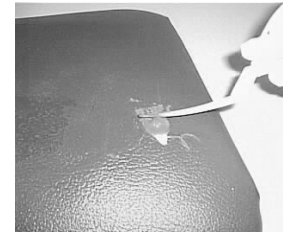
Spreading of the repair compound is the most important step in making a quality repair. How the material is spread over the damaged area will determine the finished results. The compound must be spread, using the palette knife in a very smooth and even manner. Several coats are recommended, but in many instances, one coat is sufficient. Do not apply the compound in too large of an area, or too thick, you will want to concentrate only on an area no more than one inch larger than the damaged area. This step may be repeated as often as necessary to complete the repair. The finish of the compound will become the finished product. **HINT:** When spreading the compound using the palette knife, keep the blade at a 25 to 30 degree angle. Begin the stroke slightly ahead of the area that you wish to place repair compound. With light, even pressure, drag the compound over the damaged area. Too much pressure on the blade will cause the compound to be pushed out (similar to bulldozer action), too little pressure will create heavy, distinctive edges where the compound stops. Don't worry, you will have sufficient time to get it right with a little practice.



Lift The damaged area to expose the sub patch underneath. Apply a thin coating of Vinyl Repair compound to the surface of the Sub patch. Allow the Vinyl to lay flat on top of the Sub patch and Repair Compound.



Once all areas are filled from the underside, begin filling the cracked areas from the top. Make certain that the repair compound is spread smoothly and evenly over the entire area. Do not spread the Repair Compound further than 1" beyond the damaged area. This will cause you to have to work much harder at making an invisible repair.



For Larger Holes, simply fill in the hole with Repair Compound. Make certain that the sub patch is in place before adding the repair compound.



## Step 6: Cure the Repair Compound

Once the Repair Compound is in place, lay the graining paper, which you previously selected, over the area and apply the curing tool. Hold this graining paper in place during the entire process. Keep in mind that the process that you are completing is a welding process. In effect, you are melting the vinyl and Repair Compound together in order to achieve a permanent bond. This requires a significant amount of heat. The entire curing process should be complete in about 30 - 90 Seconds, depending on the thickness and type of Vinyl being worked on. Test an inconspicuous area of the material prior to general application as different vinyl materials will require varying amounts of curing time. Overheating may cause the vinyl to melt and create the need for a much larger repair area. If insufficient heat is applied, curing of the repair compound will be inadequate and a very weak repair will result. Keep the curing tool flat and moving in circular motions over the entire damaged area. This will provide sufficient heat, without causing damage to the surrounding vinyl. Be careful not to apply the curing tool over the edges of the graining paper as this may cause unwanted ridges in the vinyl. After curing, allow the area to completely cool. Remove the graining paper, and your repair is now complete. Inspect the finished repair for total curing of the compound. Press over the area using your fingers to be certain that the repair has sufficiently bonded to the vinyl. If the compound separates, add additional compound and apply the curing method again. The repair compound may be cured numerous times using the hot curing tool and graining paper. When working large areas of damage, only work small areas at a time. These areas may be blended into each other quite easily using this method, and by doing so, you will achieve maximum results. When the repair is complete, retain the graining paper for later use. These graining papers may be reused many times to make additional repairs as the need arises. Once the repair is complete, the area may be finished using the gloss restorer if a more glossy finish is required. A quality vinyl conditioner may be applied over the entire area to create a uniform appearance to the area. Vinyl Conditioner is highly recommended for the care and treatment of vinyl. "Leather Magic" carries a complete line of vinyl care products. Contact us for more information

For questions, help and additional information contact:

Leather Magic  
1396 Walkup Ave.  
Monroe, NC 28110

**Help Line: 1-800-232-4092**

FAX 704-296-5854

Visit our web site at: <http://www.leathermagic.com>

© Copyright 1996-2004  
Leather Magic Inc.