

# LEATHER MAGIC VELOUR/CLOTH REPAIR INSTRUCTIONS

Thank you for purchasing the Leather Magic Velour Repair Kit. We know that you will be completely happy and amazed with the results of the repairs that you are now able to make with this kit. The materials contained in this kit will enable you to make permanent cosmetic repairs to almost any type of Velour, Cloth, Tweed and more. By following these simple instructions you will make long-lasting and cosmetically acceptable repairs to furniture and automotive upholstery, cloth jackets and clothing, luggage, purses, cloth convertible tops and many other uses.

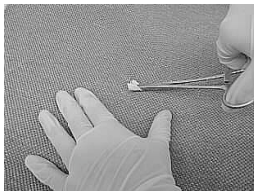
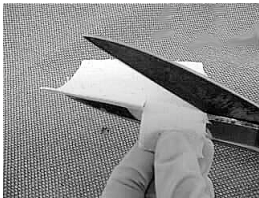
Please have the following items available before beginning the repair process: Cloth or Paper towels, Hair Dryer, 110 V outlet and extension cord.

## **Step 1: Prep the area**

The area must be clean of all dirt, oils and Fabric Protectants. Use a vacuum to remove all loose particles from the surface of the area to be repaired. If the area is heavily soiled, stained, or protected with a fabric guard, the area must be cleaned using upholstery shampoo or other suitable cleaning material. Use a Hair Dryer to make certain that the area is completely dry before proceeding.

## **Step 2: Place Sub-patch into position**

**If making repairs to burns or minor damage found only on the surface of the cloth (not all the way through the cloth), skip to step #3.**



For holes, burns or cuts all the way through the cloth, the following steps must be taken:

Cut a piece of sub-patch material (provided) at least 1/2" diameter larger than the hole. Using a pair of tweezers, push the sub-patch under the cloth. Be certain that the sub-patch is **between** the cloth and the foam padding. Also make sure that the sub-patch lies flat, no curled or raised edges, this will cause the sub-patch to become visible on the surface of the repaired area later as well as weaken the strength of the repair. Center the sub-patch material so that it is even in all directions around the hole.

Occasionally, the fabric may be glued to the foam padding. This must be separated by using tweezers, or other suitable instruments, to lift the fabric from the foam padding. This will allow much easier placement of the subpatch material.

When working on cloth convertible tops, it is necessary to place a subpatch behind the damaged area, from inside the vehicle. The subpatch should be cut at least 1/2" larger than the hole and centered over the hole from inside the vehicle. Place a small amount of the Velour adhesive onto the subpatch and lightly press it onto the back side of the convertible top material. Place masking tape over the subpatch to hold it into place until the repair has been completed. Once completed, the masking tape may be removed and the subpatch material left in place. The subpatch material may be dyed or painted to match the color of the interior of the convertible top material. This will make the subpatch blend into the convertible top material and become virtually invisible, leaving little evidence of a repair.

## **Step 3: Mix Color of Repair Fibers**

The repair Fibers come in twelve different colors and may need to be mixed in order to match the existing color of the fabric you wish to repair. A color matching guide is included in the kit to help determine which colors will be required to obtain a color match. An empty 35mm film canister or other device is highly recommended for mixing purposes. Once mixed, any remaining fibers that have not been used may be placed in a sealed container and kept for later use. For best color matching results, choose a work area with as much natural light as possible. Highly contrasting colors will create a "salt & pepper" effect. This may be desirable in certain circumstances. But, when working with solid color fabrics, try to stay with colors that are of a similar shade. This will ensure a good color match.

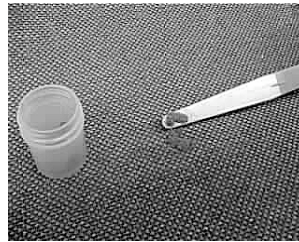


## Step 4: Apply Velour Adhesive

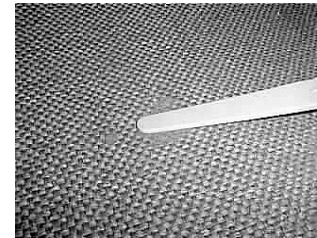
The Velour Adhesive, included in this kit, is a water based adhesive that will remain very soft and flexible when cured. Placement of the adhesive is the most important step in making a quality repair. How the material is spread over the damaged area will determine the finished results. The adhesive must be placed, using the tip of the application bottle, in a very smooth and even manner. Place the tip of the applicator bottle into the damaged area and squeeze a small amount of adhesive into the hole. Fill the hole completely with the adhesive, flush with the surface of the material. Make certain that the adhesive engages the edges and sides of the hole. It is not necessary to trim burned edges of the fabric. The adhesive will bond to these burned areas with no difficulty. Do not apply the adhesive to the surface of the fabric outside or surrounding the hole or damage, you will want to concentrate only on the immediate hole or cut. **HINT:** If foam or padding is missing under the fabric, this may be filled by using cotton, polyfill or "balled-up" paper towel under the subpatch. This will prevent excessive amounts of adhesive being used for the repair process.



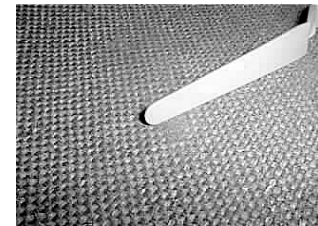
1. If the hole is all the way through the fabric, and a subpatch is required, lift The damaged area to expose the sub patch underneath. Apply a thin coating of Velour Adhesive to the surface of the Sub patch. Lightly press down on the fabric so that it will lay flat on top of the Sub patch and Adhesive. Fill the hole flush with the surface with Adhesive.



2. Once all areas are filled, begin placing the mixed fibers over the wet Adhesive. Make certain that the adhesive is spread smoothly and evenly in the hole. Do not spread the adhesive outside or beyond the damaged area. This will cause you to have to work much harder at making an invisible repair.



3. Gently pat the fibers into the Adhesive using the flat part of the blade of the pallette knife. This will ensure total contact with the adhesive, and create a permanent repair.



4. After the fibers have been gently tapped into place, use the edge of the pallette knife, and gently brush the fibers in different directions. This will create a natural look and feel to the repaired area.

## Step 5: Taking Care of the New Repair

A Hair Dryer may be used to speed up the drying time. This is useful if the seat is to be placed back into service within a relatively short period of time, or movement of the vehicle is necessary. Keep the heat settings to a minimum and allow the warm to flow over the repair for 10 minutes. The repair adhesive requires 48 hours of cure time. The unit may be placed back into service sooner, but caution must be exercised so that the repair does not receive undue stress until completely cured. Scrubbing or cleaning of the area must be avoided. Application of a commercial grade silicone spray is highly recommended to minimize abrasion of the repaired area. Once the repair adhesive has completely cured, normal care and cleaning may be resumed.

For questions, help and additional information contact:

Leather Magic  
1610 Walkup Ave.  
Monroe, NC 28110

**Help Line: 1-800-232-4092**  
FAX 704-296-5854

Visit our web site at: <http://www.leathermagic.com>

© Copyright 1996-2004  
Leather Magic Inc.