

LEATHER MAGIC DELUXE VINYL REPAIR KIT INSTRUCTIONS

Thank you for purchasing the Leather Magic Vinyl Repair Kit. We know that you will be completely happy and amazed with the results of the repairs that you are now able to make with this kit. The materials contained in this kit will enable you to make permanent cosmetic repairs to almost any type of vinyl. By following these simple instructions you will make long-lasting and cosmetically acceptable repairs to furniture and automotive upholstery, vinyl jackets and clothing, luggage, purses, golf bags and many other uses.

Please have the following items available before beginning the repair process: Cloth or Paper towels, 110 V outlet and extension cord. Please connect the curing tool to the electrical supply so that it will be hot when you are ready to proceed. Exercise extreme caution when using the curing tool, since it will develop extreme heat which may cause bodily injury or damage to property.

Step 1: Prep the area

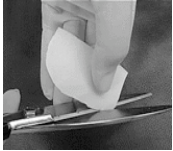
Clean the area. Using a mild detergent, thoroughly clean the surface to remove all dirt, grease or other foreign matter that may interfere with the adhesion of the repair compound and colorant. Rinse the area well with clean water to remove all traces of cleaning material and dry thoroughly. Make certain that all foreign matter such as particles of dirt, or other loose matter is removed from between the seams and crevices.

Next, apply the Vinyl Prep solution provided (please see the specifications and warnings about the proper use of Vinyl Prep at the bottom of these instructions). Wet the area well using a cloth or paper towel and scrub the area vigorously to open the pores of the surface of the Vinyl. Some removal of the existing surface color is normal and should be expected. Dry the entire area well before proceeding. The Vinyl Prep is highly flammable and must be kept away from heat and open flame.



Step 2: Place Sub-patch into position

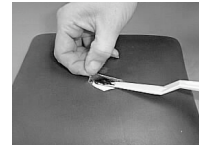
If making repairs to scratches, cracks or burns only on the surface of the vinyl (not all the way through the vinyl), skip to step #4.



For holes, burns or cuts all the way through the vinyl, the following steps must be taken:

Cut a piece of sub-patch material (provided) at least 1/2" diameter larger than the hole. Using a pair of tweezers, push the sub-patch under the vinyl. Be certain that the sub-patch is **between** the vinyl and the foam padding. Also make sure that the sub-patch lies flat, no curled or raised edges, this will cause the sub-patch to become visible on the surface of the repaired area later as well as weaken the strength of the repair. Center the sub-patch material so that it is even in all directions around the hole.

Using the palette knife provided, place a thin layer of Vinyl Repair Compound between the Subpatch and under side of the Vinyl. This material will be cured and retain the sub patch during the actual repair process.



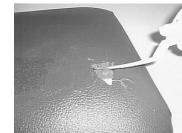
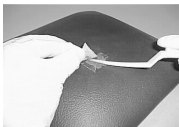
Step 3: Lay Damaged Vinyl Flat:

Select the graining paper (included in the kit) that most closely matches the grain pattern of your vinyl. Lay this grain paper over the damaged area and apply the curing tool over the graining paper. Apply very light pressure to the tip of the curing tool and move in circular motions over the damaged area. Allow the heat and pressure of the curing tool to force the vinyl back into the original position. If the vinyl does not lay completely flat, do not worry, this will be corrected later. Allow sufficient heating time (approximately 3-5 minutes) for the vinyl to heat enough for the process to be successful.



Step 4: Apply Repair Compound

Spreading of the repair compound is the most important step in making a quality repair. How the material is spread over the damaged area will determine the finished results. The compound must be spread, using the palette knife in a very smooth and even manner. Several coats are recommended, but in many instances, one coat is sufficient. Do not apply the compound in too large of an area, or too thick, you will want to concentrate only on an area no more than one inch larger than the damaged area. This step may be repeated as often as necessary to complete the repair. The finish of the compound will become the finished product. **HINT:** When spreading the compound using the palette knife, keep the blade at a 25 to 30 degree angle. Begin the stroke slightly ahead of the area that you wish to place repair compound. With light, even pressure, drag the compound over the damaged area. Too much pressure on the blade will cause the compound to be pushed out (similar to bulldozer action), too little pressure will create heavy, distinctive edges where the compound stops. Don't worry, you will have sufficient time to get it right with a little practice.



Lift The damaged area to expose the sub patch underneath. Apply a thin coating of Vinyl Repair compound to the surface of the Sub patch. Allow the Vinyl to lay flat on top of the Sub patch and Repair Compound.

Once all areas are filled from the underside, begin filling the cracked areas from the top. Make certain that the repair compound is spread smoothly and evenly over the entire area. Do not spread the Repair Compound further than 1" beyond the damaged area. This will cause you to have to work much harder at making an invisible repair.

For Larger Holes, simply fill in the hole with Repair Compound. Make certain that the sub patch is in place before adding the repair compound.

Step 5: Cure the Repair Compound

Once the Repair Compound is in place, lay the graining paper, which you previously selected, over the area and apply the curing tool. Hold this graining paper in place during the entire process. Keep in mind that the process that you are completing is a welding process. In effect, you are melting the vinyl and Repair Compound together in order to achieve a permanent bond. This requires a significant amount of heat. The entire curing process should be complete in about three to six minutes, depending on the thickness and type of Vinyl being worked on. If insufficient heat is applied, curing of the repair compound will be inadequate and a very weak repair will result. Keep the curing tool flat and moving in circular motions over the entire damaged area. This will provide sufficient heat, without causing damage to the surrounding vinyl. Be careful not to apply the curing tool over the edges of the graining paper as this may cause unwanted ridges in the vinyl. After curing, allow the area to completely cool. Remove the graining paper, and your repair is now complete. Inspect the finished repair for total curing of the compound. Press over the area using your fingers to be certain that the repair has sufficiently bonded to the vinyl. If the compound separates, add additional compound and apply the curing method again. The repair compound may be cured numerous times using the hot curing tool and graining paper. When working large areas of damage, only work small areas at a time. These areas may be blended into each other quite easily using this method, and by doing so, you will achieve maximum results. When the repair is complete, retain the graining paper for later use. These graining papers may be reused many times to make additional repairs as the need arises. Once the repair is complete, the area may be finished using the gloss restorer if a more glossy finish is required. A quality vinyl conditioner may be applied over the entire area to create a uniform appearance to the area. Vinyl Conditioner is highly recommended for the care and treatment of vinyl. "Leather Magic" carries a complete line of vinyl care products. Contact us for more information



Step 6: Apply New Finish

Cover the surrounding work area with drop cloths to prevent over spray or spills onto other areas. Make certain that the entire area that you will be applying color coat to has been prepared in the manner previously described. Using the applicator sponge, wipe a light coat onto the area. Apply the colorant with smooth, even strokes. Avoid leaving bubbles or "brush marks". These may be wiped out before drying. (Do not try to cover the area in one coat, several light coats work best. **The least amount of colorant used produces a much better finish and will last longer.** Dry the area well between coats. You may use a hair dryer on low heat.

Once dry you may spray a light coat of colorant over the area. Attach the sprayer unit to the bottle of Color Coat and apply the colorant just as you would an aerosol paint. Hold the sprayer approximately 6 to 8 inches from the surface and move the sprayer in smooth even strokes, overlapping each stroke to achieve an even spray. Do not shake the sprayer or hold at too sharp of an angle while spraying. This will cause the sprayer to "spit" causing bubbles and uneven spray to be applied to the surface. **Light coats are better than heavier coats.** The least amount of colorant applied, the better. Several coats may be required. Do not try to cover the area with one coat. Repeat this step, drying in between until you have covered the area to your satisfaction. Be extremely careful to prevent over spray from getting on any surrounding areas. A little practice using the spray unit is highly recommended before applying the new color coat to your Vinyl.

Once the recoloring procedure has been completed, use extreme caution when using the refinished item for the first 48 hours. The newly repaired finish may be easily damaged by liquids, chemicals and heavy wear. By allowing this curing time, the new color coat will achieve maximum performance levels and ensure durability. After 48 hours, a high quality Vinyl conditioner should be applied to the area. This will compliment the durability and finish of the colorant. No other special measures will need to be taken except for normal care and cleaning. **Clean Up:** The colorant used in this kit is water based and may be cleaned by means of soap and water. Rubbing alcohol may also be used to remove over spray or for cleaning application equipment. For the first couple of hours, clean-up will be relatively easy. After 48 hours clean-up will be extremely difficult.

Vinyl Prep: Vinyl Prep is a very strong Alcohol based product that must be handled properly.

1. Always use protective gloves when working with Vinyl Prep.
2. Make certain that adequate ventilation is provided during its' use. The use of a respirator that conforms to 9NIOSH/MSHA TC 23C or equivalent is recommended during and after application unless air monitoring demonstrates vapor/mist levels are below applicable limits. Follow respirator manufactures' directions for respirator use.
3. EXTREMELY FLAMMABLE LIQUID MAY BE HARMFUL OR FATAL IF SWALLOWED OR INHALED KEEP OUT OF REACH OF CHILDREN

NA 1263 Paint Related Material

For questions, help and additional information contact:

Leather Magic
1610 Walkup Ave.
Monroe, NC 28110

Help Line: 1-800-232-4092

FAX 704-296-5854

Visit our web site at: <http://www.leathermagic.com>

© Copyright 1996-2004
Leather Magic Inc.